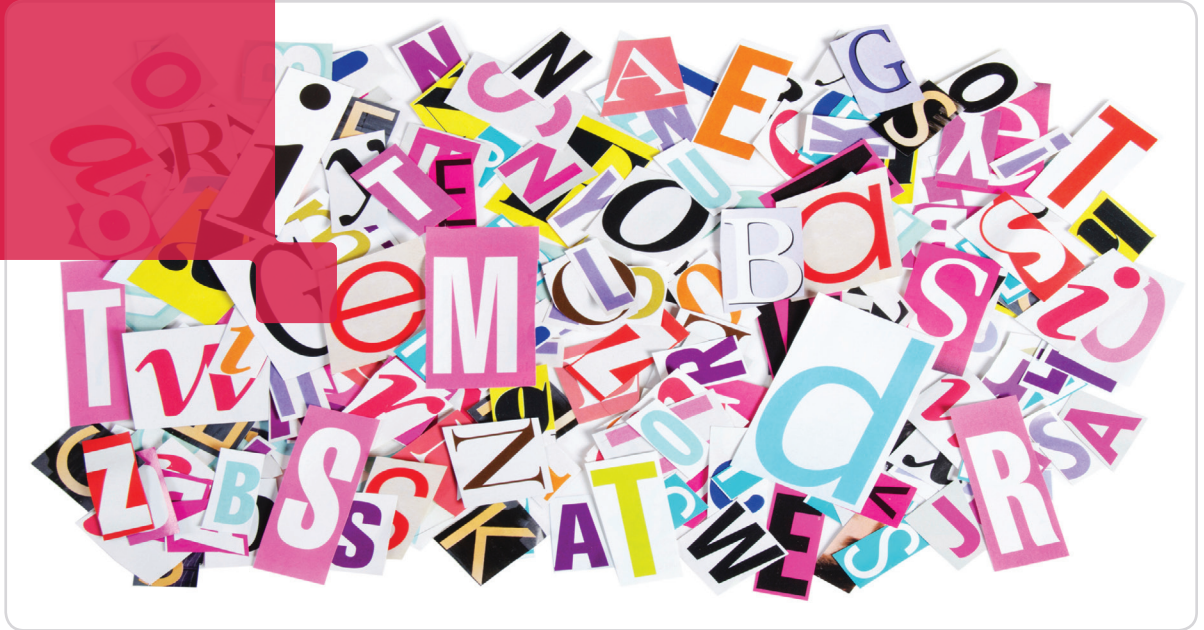


# InfoPrint Font Collection

**RICOH**  
imagine. change.



## Customize document appearance

Printed materials, from corporate communications to books, are created for a reason. You want to get a message across as quickly and completely as possible. Typefaces help you do that.

Typefaces are an important part of messaging because they can express a style, set the tone of a document, call attention to specific items and reinforce corporate branding. The faster and more fully you can engage readers, the higher the likelihood they will read and respond. In other words, typefaces can support your goal of standing out in a competitive marketplace.

## Facilitate globalization

The InfoPrint® Font Collection consists of character sets and Advanced Function Presentation™ (AFP™) code pages that let you print documents using familiar typefaces such as Helvetica, Times New Roman and Courier. The code pages allow you to print in more than 50 languages.

In addition, the InfoPrint Font Collection includes WorldType fonts, a set of four TrueType/OpenType technology-based character sets that let you print Unicode-encoded AFP data in multiple languages with a single font. They can be used in existing AFP applications to facilitate globalization, which can be difficult using only the AFP font architecture.

## HIGHLIGHTS

- Create AFP applications in popular typefaces found in Microsoft® and Apple® applications
- Enhance the readability of documents to help achieve their intended effect
- Draw attention to specific items, create emphasis and improve readers' responsiveness to business communications
- Customize the appearance of documents to express your style and tone
- Globalize AFP applications in multiple languages using a single font
- Improve print quality on high-resolution printers

## Improve print quality for legacy AFP applications

Legacy AFP applications may reference raster fonts designed for older, low-resolution printers. To help you improve output quality by using 600 or 1,200 dpi printers, the InfoPrint Font Collection works seamlessly with other Ricoh products. InfoPrint Manager software and RICOH ProcessDirector software, and newer printers from Ricoh, can automatically substitute equivalent AFP outline fonts for raster fonts—if there is an outline font by the same name as the raster font.

When system substitution with outline fonts is not possible, the AFP raster fonts are included in the InfoPrint Font Collection to support applications that reference them or older AFP/Intelligent Printer Data Stream™ (IPDS™) printers.

## Maximize design flexibility with TrueType/OpenType fonts

To achieve the most flexibility to design documents your way, migrate to TrueType/OpenType fonts. An open, widely published standard, TrueType/OpenType font technology, developed by Apple and Microsoft, is the most prevalent font technology in our industry.

OpenType is an extension of TrueType, and it provides superior support for international character sets and for multiple platforms. OpenType includes the information you need to fully support Unicode data for multilingual print and presentation using a single font. TrueType/OpenType fonts are readily available in hundreds of typefaces from a large number of vendors.

## For more information

Contact your Ricoh production print specialist or visit [www.ricoh-usa.com/rpp](http://www.ricoh-usa.com/rpp).

**RICOH**  
imagine. change.

[www.ricoh-usa.com](http://www.ricoh-usa.com)

© Copyright Ricoh Company, Ltd. 2014.  
All Rights Reserved.  
6300 Diagonal Hwy 002J  
Boulder, CO 80301-9270

Ricoh® and InfoPrint® are trademarks or registered trademarks of Ricoh Co., Ltd., in Japan, the United States and other countries.

All other trademarks are the property of their respective owners. Product performance may be affected by environmental factors. Specifications and external appearances are subject to change without notice. Products may be shown with optional features.

## InfoPrint Font Collection V3.2 at a glance

Minimum hardware requirements:	IBM® System p® or System x® servers capable of running InfoPrint Manager or RICOH ProcessDirector
Software requirements:	InfoPrint Font Collection can be installed and used on any AIX, Windows or Linux system platform supported by current releases of InfoPrint Manager and RICOH ProcessDirector.
InfoPrint Font Collection offers:	<p>A way to help you create AFP applications in the same popular typefaces found in Microsoft, Apple and other presentation environments.</p> <ul style="list-style-type: none"><li>• Globalization of AFP applications in multiple languages using a single font</li><li>• A set of AFP fonts that are consistent with those used in legacy AFP applications</li><li>• A basic set of fonts in three technologies that can be used in creating AFP applications:<ul style="list-style-type: none"><li>– AFP raster fonts in 240 and 300 dots per inch</li><li>– AFP outline fonts</li><li>– WorldType font typefaces, including:<ul style="list-style-type: none"><li>○ WorldType Sans</li><li>○ WorldType SansDuo</li><li>○ WorldType Serif</li><li>○ WorldType SerifDuo</li></ul></li></ul></li><li>• WorldType font locales for printing in China, Hong Kong, India, Japan, Korea, Middle East, Southeast Asia</li><li>• A Resource Access Table (RAT) for printing with OpenType fonts in AFP systems</li><li>• Language standard support for GB18030, JIS X 0213:2004, HKSCS:2004 and HKSCS:2008</li><li>• AFP Classics fonts with Courier, Helvetica and Times New Roman typefaces in a TrueType/OpenType font format</li></ul>