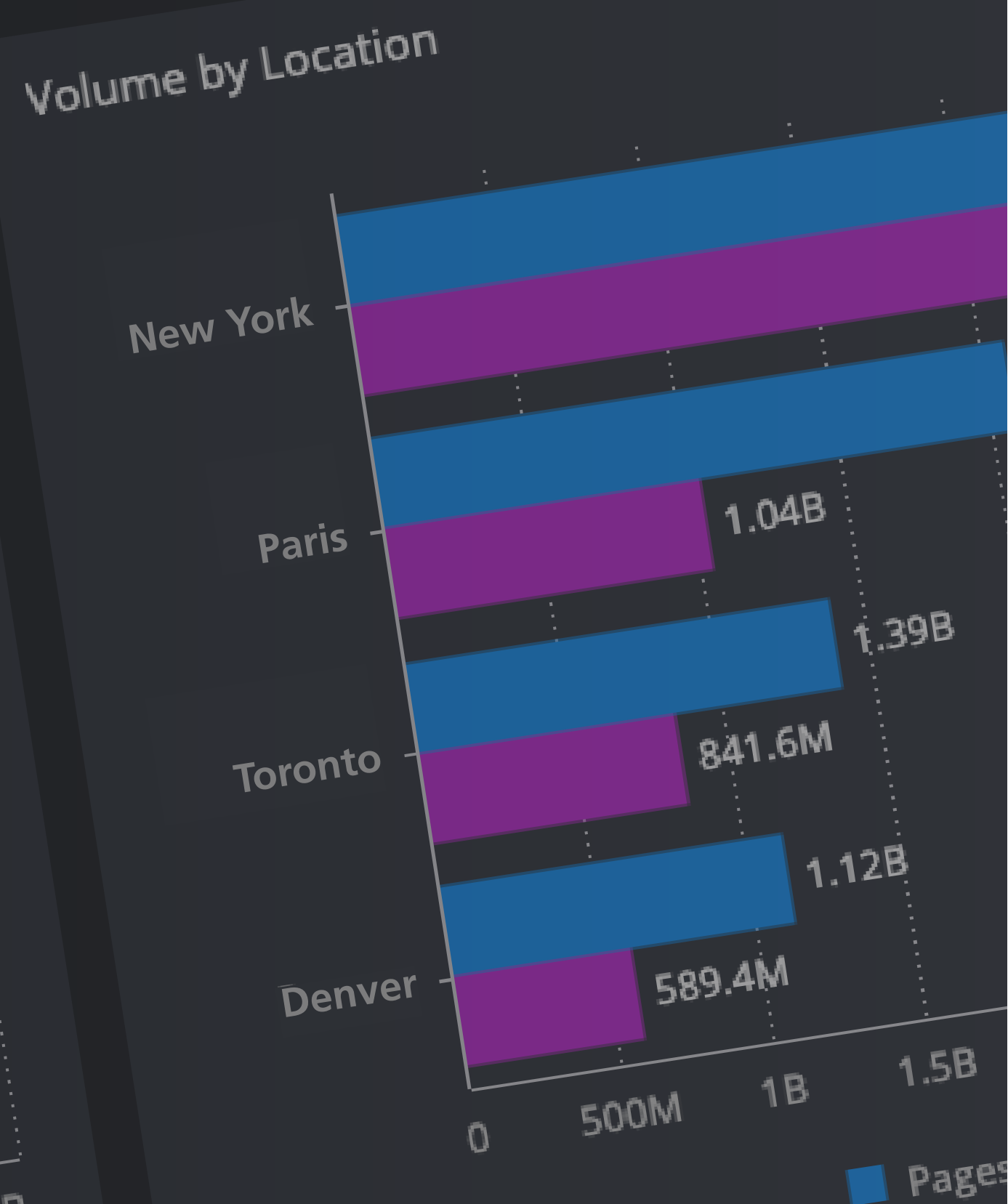
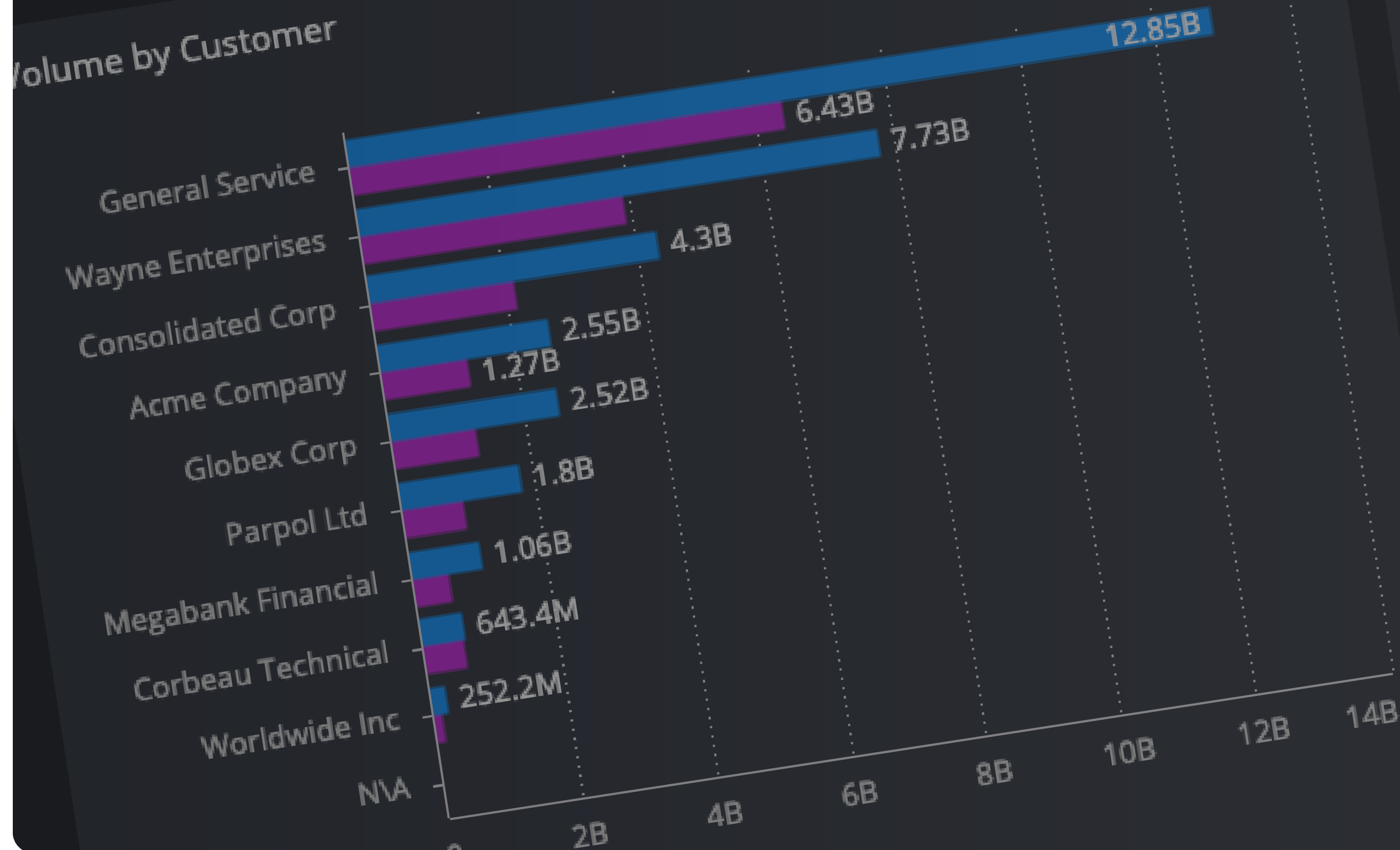
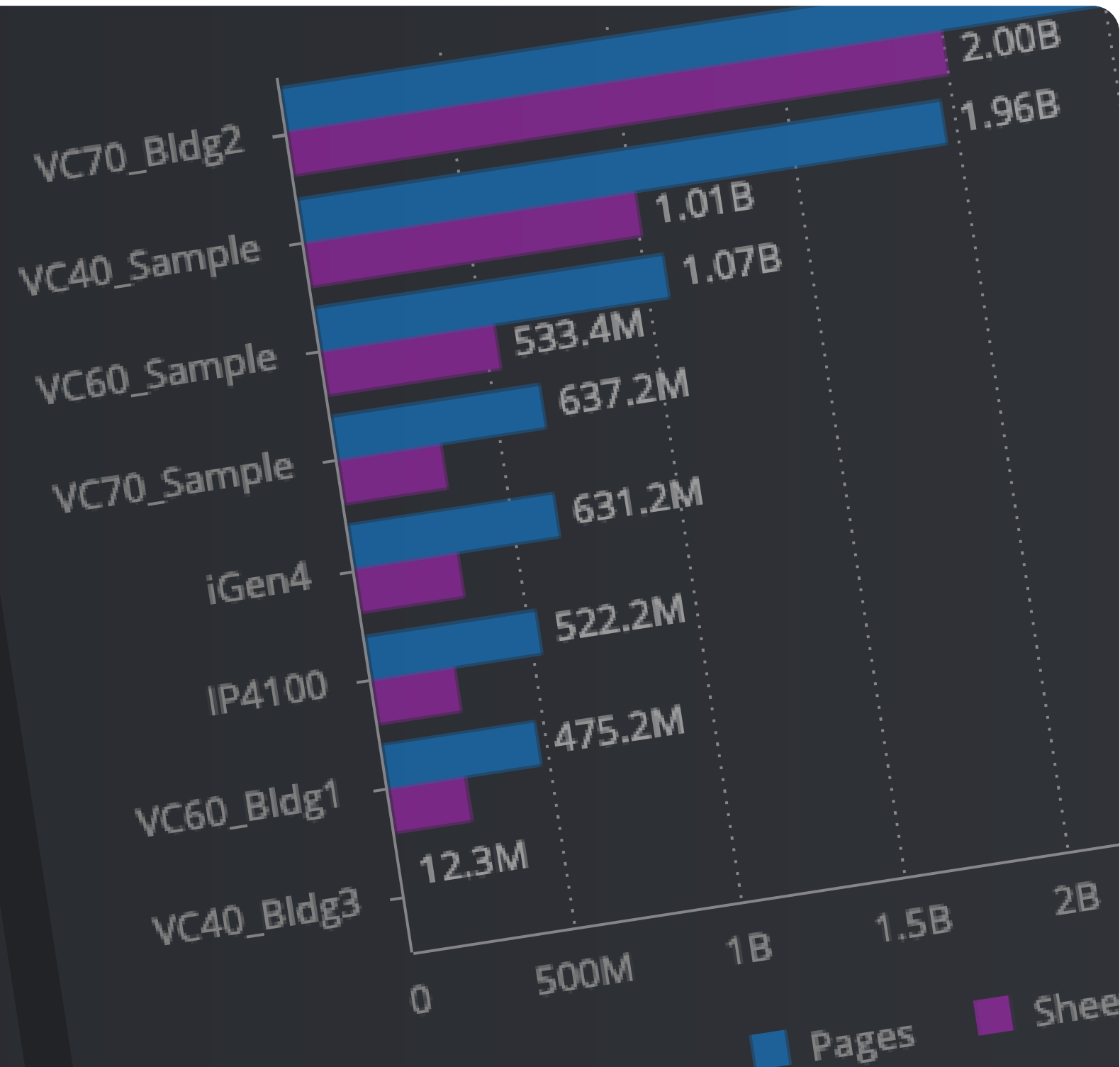


# RICOH Supervisor™

Customizable  
Data Visualization



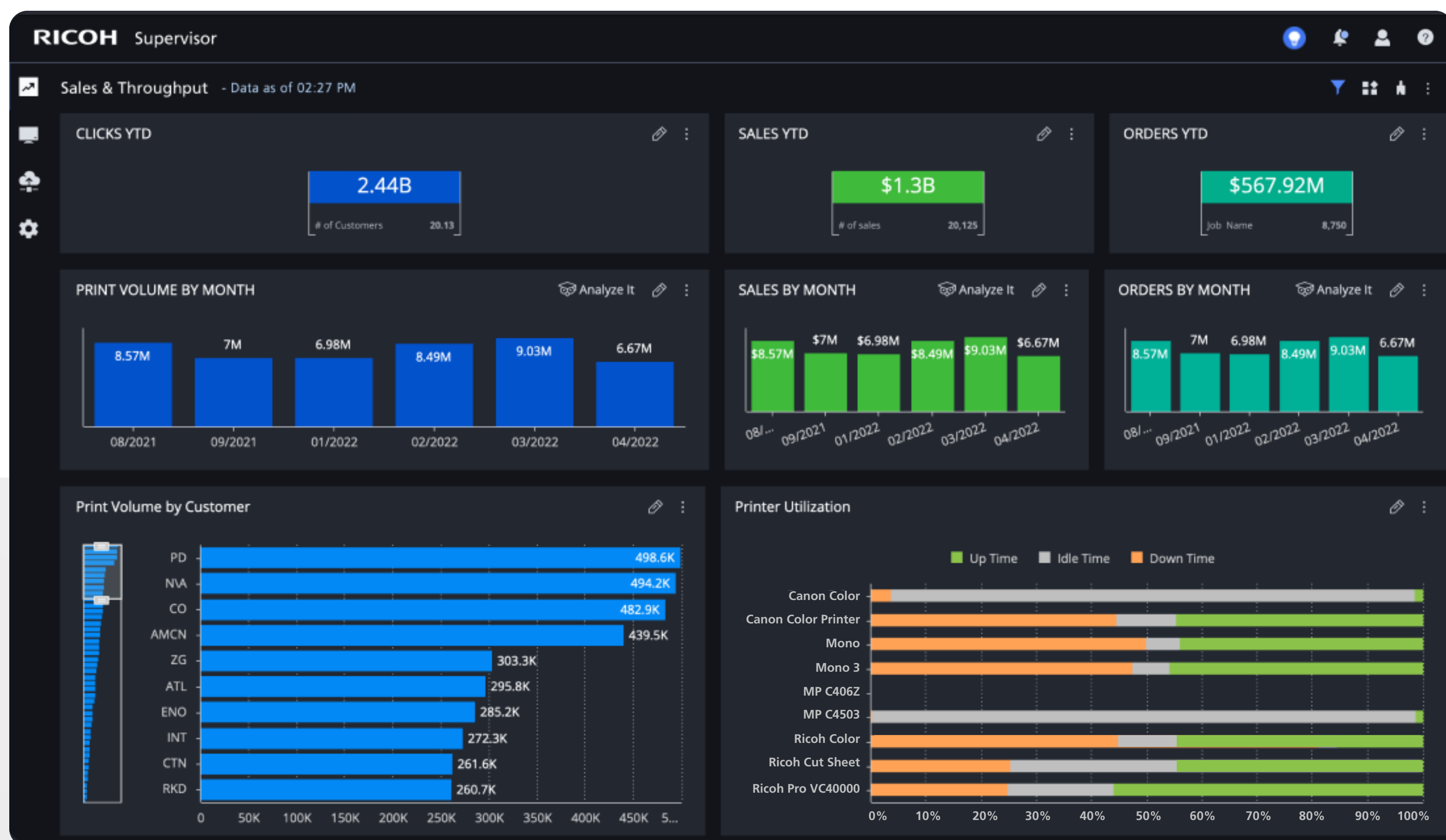
Use your operational data to  
drive better business results

**RICOH**  
imagine. change.

# Gain insights into your device utilization and operator efficiency

To succeed in today's ever-evolving professional print marketplace, RICOH Supervisor™ leverages a vendor-agnostic approach to equip you with organization-wide visibility to drive strategic business decisions.

- Track operational trends impacting your production
- Empower your business with automated data collection on real-time dashboards to optimize your operational performance
- Cloud-based subscription eliminates the need for significant, upfront IT investments



## Drive ongoing improvement and continuous growth

By collecting local operational data from your printers, finishing, software and shop floor, RICOH Supervisor will display trends, inefficiencies, consumables and sales cycles.



# Eliminate the guesswork and make data-driven decisions



## Greater data transparency

Visualize your key operational data through RICOH Supervisor's customizable, web-based dashboards.

- Create custom dashboards to focus on the most relevant data points for your short or long-term decision-making
- Focus on data for specific devices, operators or jobs to evaluate particular parts of your operation
- Automatically consolidate and compare data across printers, shifts, and locations to eliminate data silos



## Optimize performance

Analyze workflows and individual device statistics to eliminate bottlenecks and boost productivity.

- Track your device status, idle time, throughput and more to maximize capacity utilization
- Visualize your load balancing to reroute work accordingly
- Identify inefficiencies that are costing your organization time and money



## Actionable business insights

Leverage the data captured across your operation to make improved business decisions and investments that drive optimal performance and increase profitability.

- Identify areas where automation can save time and money increasing ROI
- Gain key insights before changing your operation to ensure the best business outcomes
- Utilize captured data to help make informed purchasing decisions

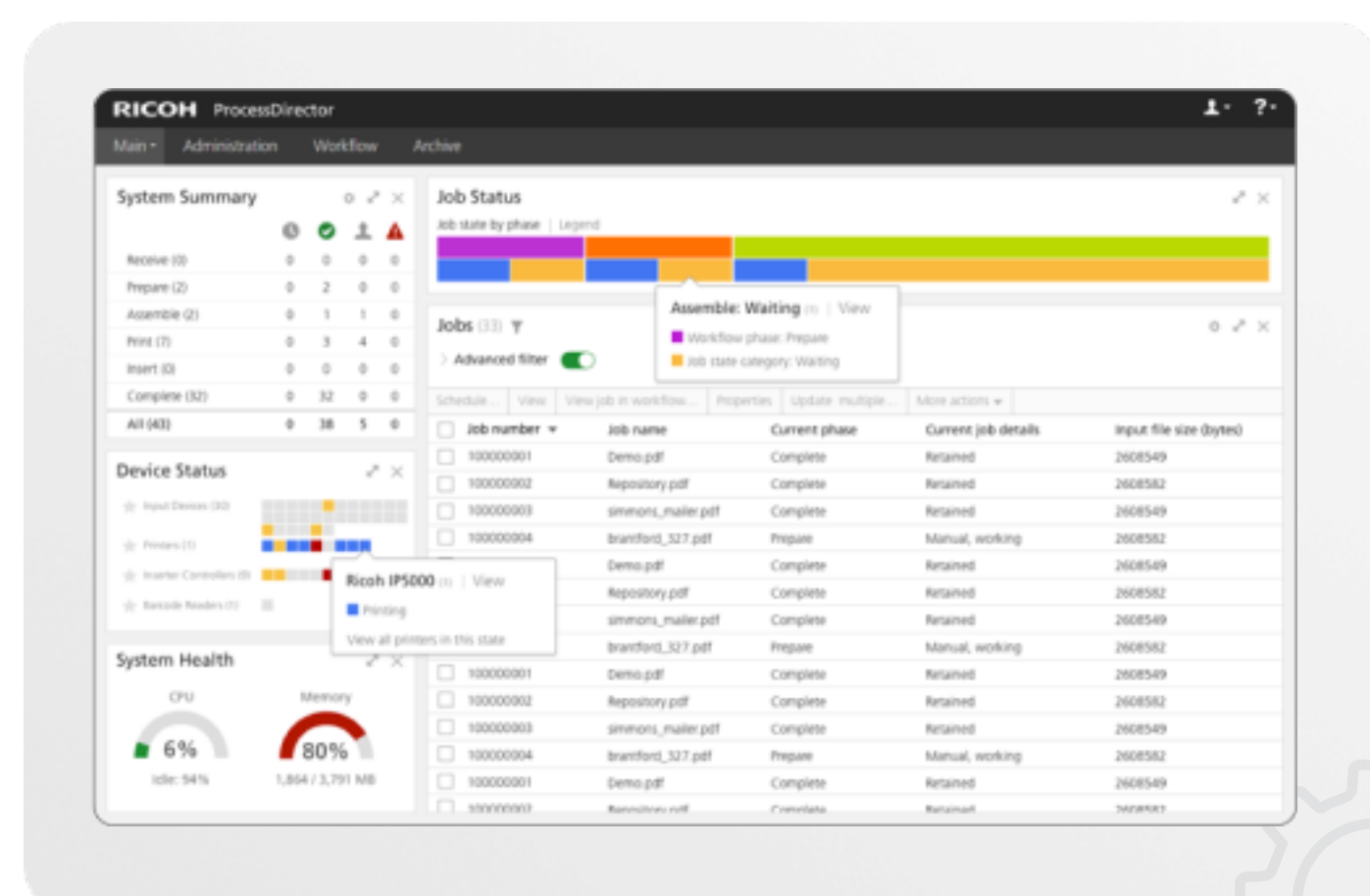
# Take your analytics further with the **latest integrations**

Integrate RICOH Supervisor with other workflow solutions and ensure consistent information with additional data visibility down to the job and document level. These solutions will further enable you to make sure that you're growing revenue and profitability.

## WorkFlow Automation

RICOH ProcessDirector™ is a leading **automated end-to-end workflow management solution** designed to capture, transform, and manage data and processes for greater operational efficiency and profitability.

- Visualizing job and document production volume to identify bottlenecks and areas for process improvement
- Gain more awareness into detailed job and customer information to increase customer satisfaction
- By integrating, these platforms understand more detailed historical trends, costs, job and device information and enhance division and operational performance



## Business Management & Print MIS

Flexible and intuitive, Avanti Slingshot® Print MIS offers a suite of tools to efficiently manage your **key business and operational processes**, including estimating, scheduling, shop-floor data collection, shipping, and fulfillment.

- Leverage and analyze unique business-related data including estimating versus actual cost
- Seamlessly integrate and share data with Ricoh solutions and your corporate business systems
- Gain a holistic view, track your entire business operation and determine which products and clients are the most profitable





## RICOH Supervisor **Next Steps**

Speak with your Ricoh sales representative to request a demonstration to personally experience how RICOH Supervisor can empower your business with organization-wide visibility or visit [www.ricohsoftware.com](http://www.ricohsoftware.com) to request a free software trial.

**RICOH**  
imagine. change.

**Ricoh USA, Inc., 300 Eagleview Blvd, Exton, PA 19341, 1-800-63-RICOH.**

©2022 Ricoh USA, Inc. All rights reserved. Ricoh® and the Ricoh logo are registered trademarks of Ricoh Company, Ltd. All other trademarks are the property of their respective owners. This document is for informational purposes only and this document and any related services or products described herein are not intended to provide any legal, regulatory, compliance, or other similar advice. You are solely responsible for ensuring your own compliance with all legal, regulatory, compliance, or other similar obligations. While care has been taken to ensure the accuracy of this information, Ricoh makes no representation or warranties about the accuracy, completeness or adequacy of the information contained herein, and shall not be liable for any errors or omissions in these materials. Actual results will vary depending upon use of the products and services and the conditions and factors affecting performance. The only warranties for Ricoh products and services are as set forth in the express warranty statements accompanying them.